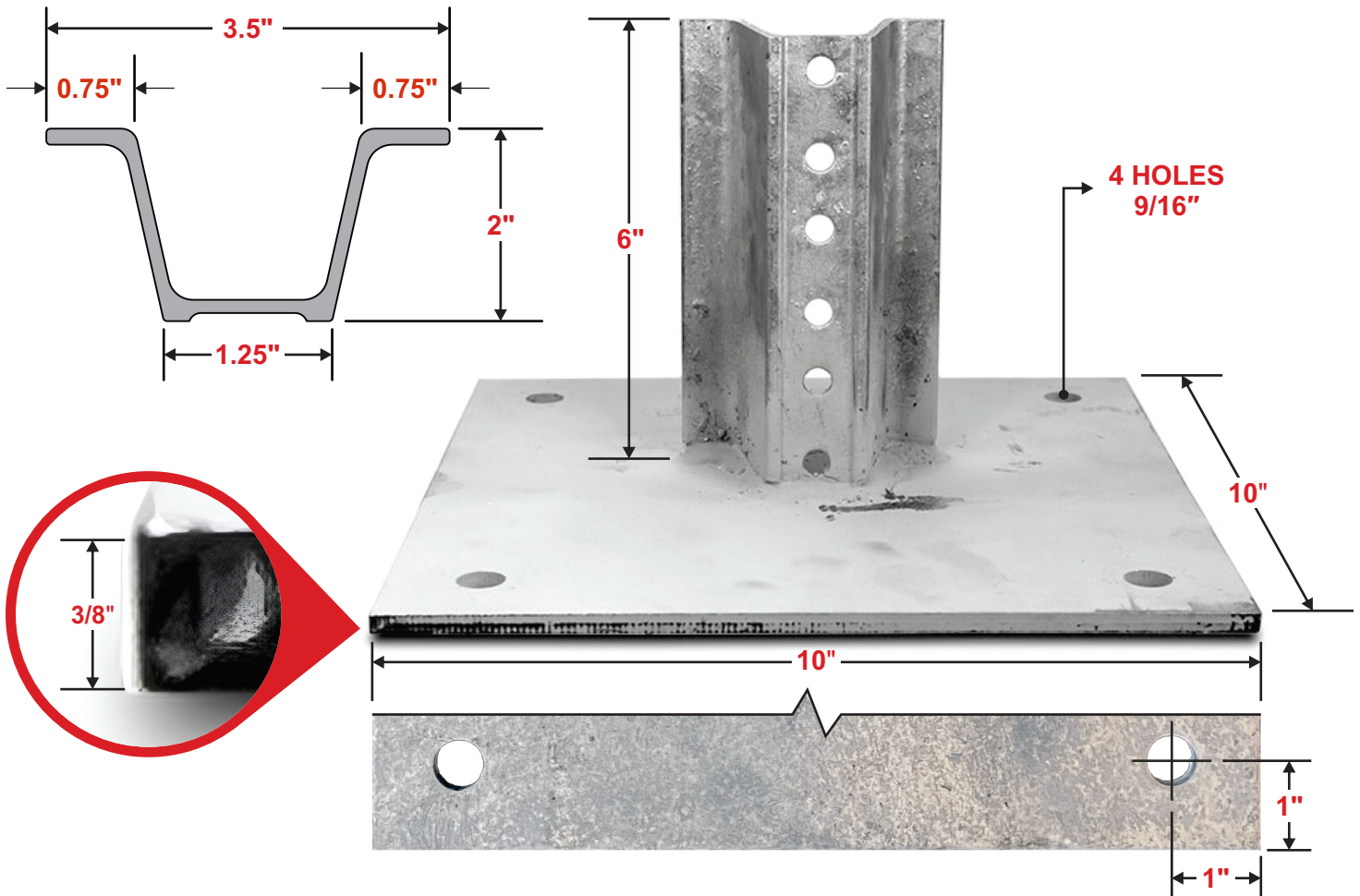


## Product Information Bulletin

64 Outwater Lane, Garfield, NJ 07026 Ph: 973-340-7889 | Fax: 973-340-7809

# U-Channel Surface Mount Post Base - Y3545

## For 2 lbs./ft. U-channel posts only



The U-Channel post surface mount base is a great choice when you need to install a signpost in concrete or asphalt surfaces and don't want to cut through them to install the post. It's designed to work with 2 lbs./ft. U-Channel posts and is made of galvanized steel for durability. It has four 9/16" mounting holes in each corner of the base plate for anchoring the base to the ground.

Each U-Channel Surface Mount Post Base comes with 2 hex head bolts and 2 nuts to secure a sign post. It can also be ordered with a concrete anchor kit which contains four 1/2" x 4" lag screws, four 3" plastic anchors, and four 1/2" washers, or it can be ordered with an asphalt anchor kit which contains four 6" anchors, four 1" hex head bolts, 4 washers and 2 bags of concrete based grout.

DATE: \_\_\_ / \_\_\_ / \_\_\_

JOB: \_\_\_\_\_

CONTRACTOR: \_\_\_\_\_